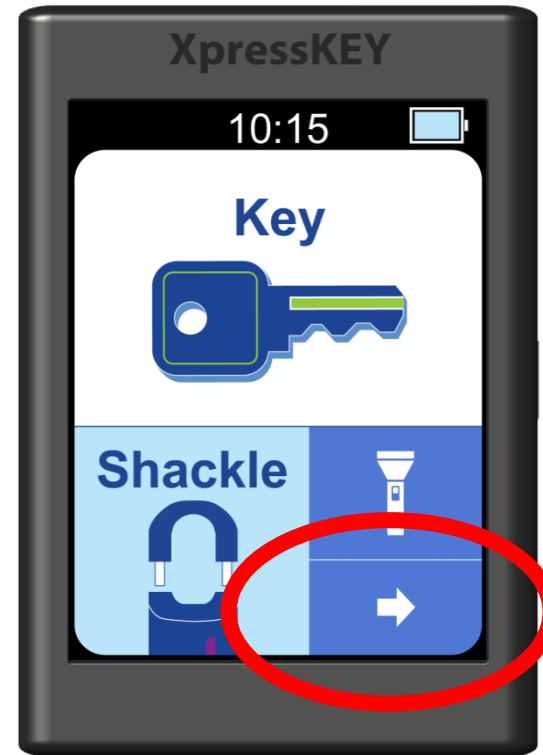


How to *Change the PIN*

1. Tap the **arrow**.

XpressKEY®

1. Tap the **arrow**.
2. Tap **Preferences**.
3. Tap **Change PIN**.
4. Tap **Next** to proceed.
5. Type the old PIN and **Enter**.
6. Type the new PIN and **Enter**.
7. Confirm the new PIN and **Enter**.
8. Tap **Done** to exit.

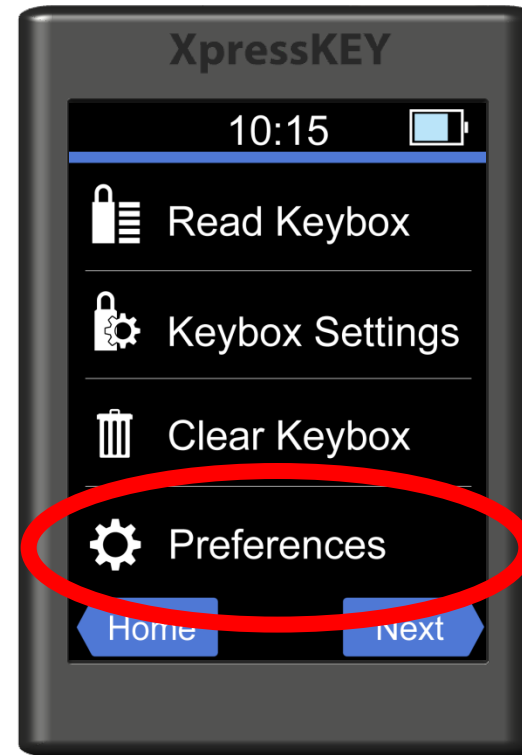


How to *Change the PIN*

2. Tap Preferences.

XpressKEY

1. Tap the **arrow**.
2. Tap **Preferences**.
3. Tap **Change PIN**.
4. Tap **Next** to proceed.
5. Type the old PIN and **Enter**.
6. Type the new PIN and **Enter**.
7. Confirm the new PIN and **Enter**.
8. Tap **Done** to exit.

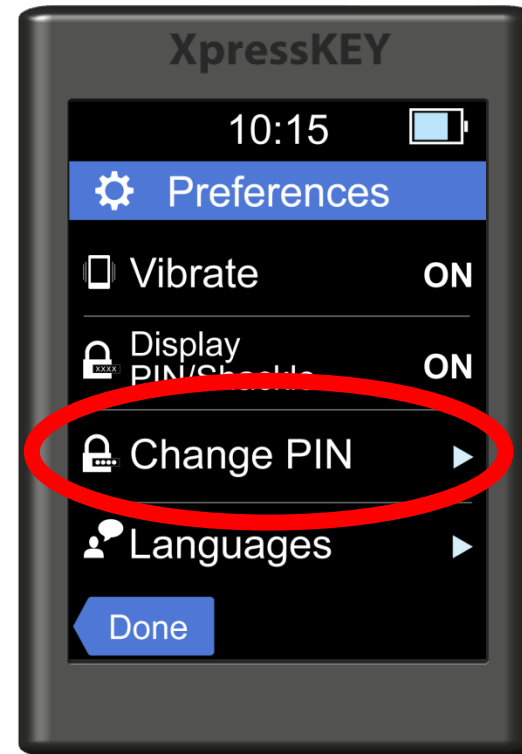


How to *Change the PIN*

XpressKEY

1. Tap the **arrow**.
2. Tap **Preferences**.
3. Tap **Change PIN**.
4. Tap **Next** to proceed.
5. Type the old PIN and **Enter**.
6. Type the new PIN and **Enter**.
7. Confirm the new PIN and **Enter**.
8. Tap **Done** to exit.

3. Tap **Change PIN**.

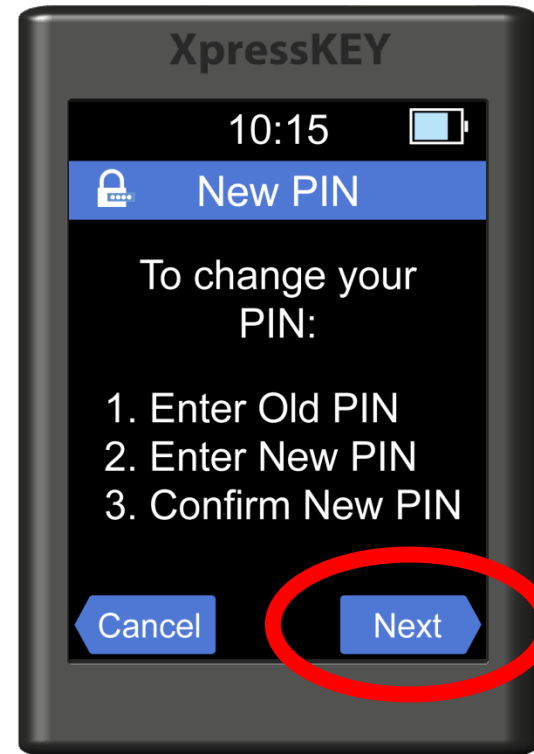


How to *Change the PIN*

XpressKEY

1. Tap the **arrow**.
2. Tap **Preferences**.
3. Tap **Change PIN**.
4. Tap **Next** to proceed.
5. Type the old PIN and **Enter**.
6. Type the new PIN and **Enter**.
7. Confirm the new PIN and **Enter**.
8. Tap **Done** to exit.

4. Tap **Next** to proceed.

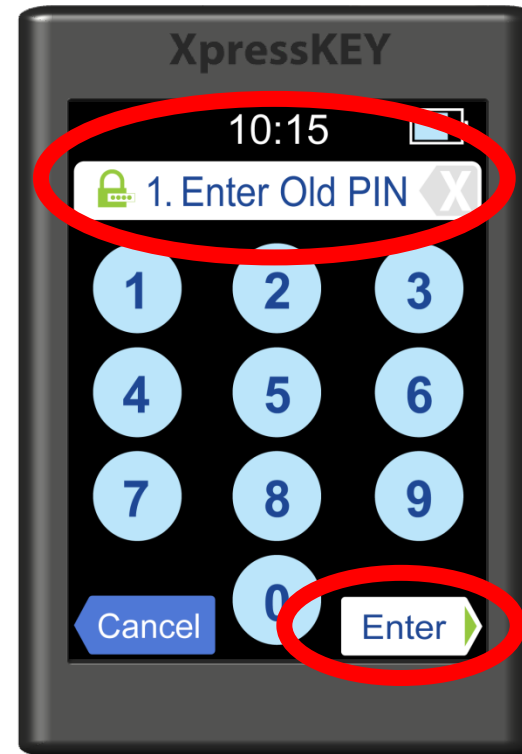


How to *Change the PIN*

XpressKEY

1. Tap the **arrow**.
2. Tap **Preferences**.
3. Tap **Change PIN**.
4. Tap **Next** to proceed.
5. Type the old PIN and **Enter**.
6. Type the new PIN and **Enter**.
7. Confirm the new PIN and **Enter**.
8. Tap **Done** to exit.

5. Type the old PIN and **Enter**.

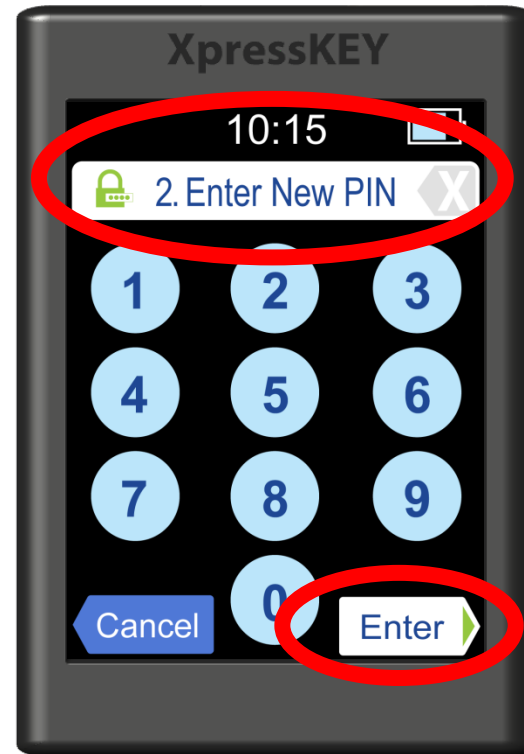


How to *Change the PIN*

6. Type the new PIN and **Enter**.

XpressKEY

1. Tap the **arrow**.
2. Tap **Preferences**.
3. Tap **Change PIN**.
4. Tap **Next** to proceed.
5. Type the old PIN and **Enter**.
6. Type the new PIN and **Enter**.
7. Confirm the new PIN and **Enter**.
8. Tap **Done** to exit.

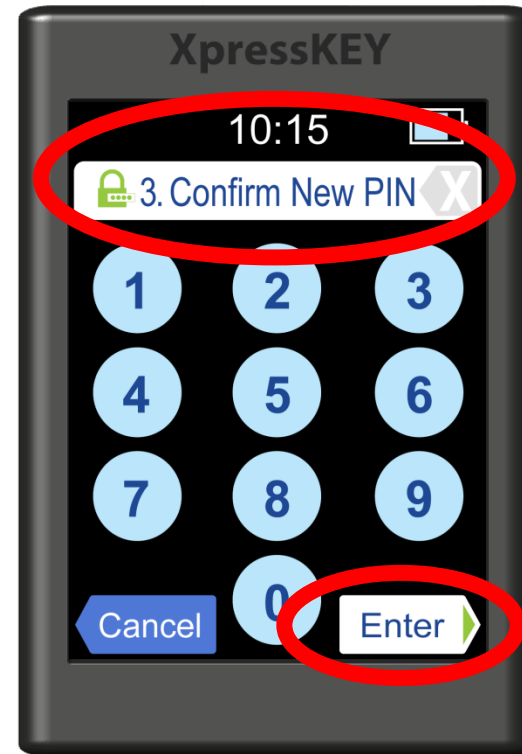


How to *Change the PIN*

7. Confirm the new PIN and **Enter**.

XpressKEY

1. Tap the **arrow**.
2. Tap **Preferences**.
3. Tap **Change PIN**.
4. Tap **Next** to proceed.
5. Type the old PIN and **Enter**.
6. Type the new PIN and **Enter**.
7. Confirm the new PIN and **Enter**.
8. Tap **Done** to exit.

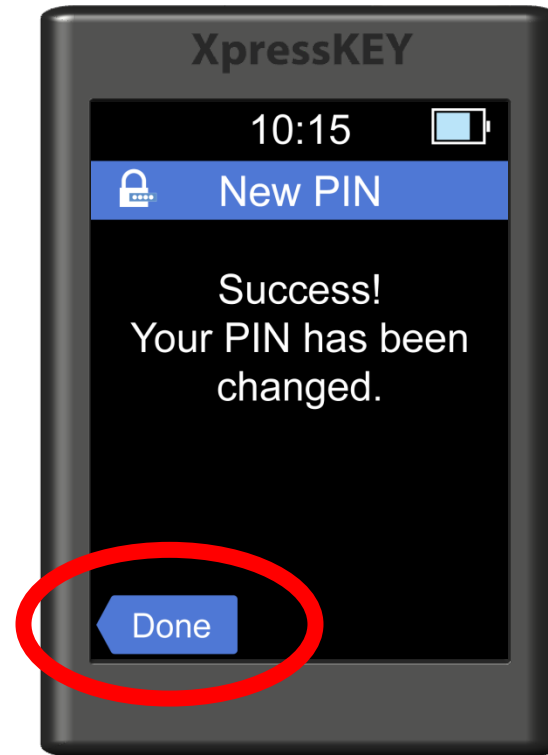


How to *Change the PIN*

8. Tap **Done** to exit.

XpressKEY

1. Tap the **arrow**.
2. Tap **Preferences**.
3. Tap **Change PIN**.
4. Tap **Next** to proceed.
5. Type the old PIN and **Enter**.
6. Type the new PIN and **Enter**.
7. Confirm the new PIN and **Enter**.
8. Tap **Done** to exit.



For the latest information, visit us at www.supraekey.com and select the **Customer Support** tab.



© 2016 United Technologies Corporation. All rights reserved. Supra is a part of UTC Climate, Controls & Security (CCS), and a unit of United Technologies Corporation. Supra and XpressKEY are registered trademarks of United Technologies Corporation. Other brand and product names are or may be the trademarks of, and are used to identify products or services of, their respective owners.

